

Third Generation - Sequential Batch Reactor (SBR)

(Kingsford BASS™)

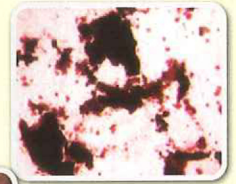
Kingsford BASS™ is a Hybrid system with the combination of SBR2™ and suspended growth process in a single treatment process. It incorporates biofilm carriers in the SBR basin to enhance the biological treatment process.

Benefits and Advantages

- Single basin process
- Cost savings
- Space saving
- Reduce operation cost
- Provides continuous acceptance of influent wastewater
- Allows hydraulic peak flow cycle
- Provide low cost biological N&P removal
- Better effluent quality
- Flexibility for modular & retrofitting expansion
- Tolerates hydraulic & organic shock loading & temperature variation
- Reliable treatment & flexible operation for wider range of organic & nutrients loading



Kingsford BASS™
Decanter



Thick biofilm
pieces from
BASS™ process



Activated sludge
from BASS™
process
Denser &
separate flocs

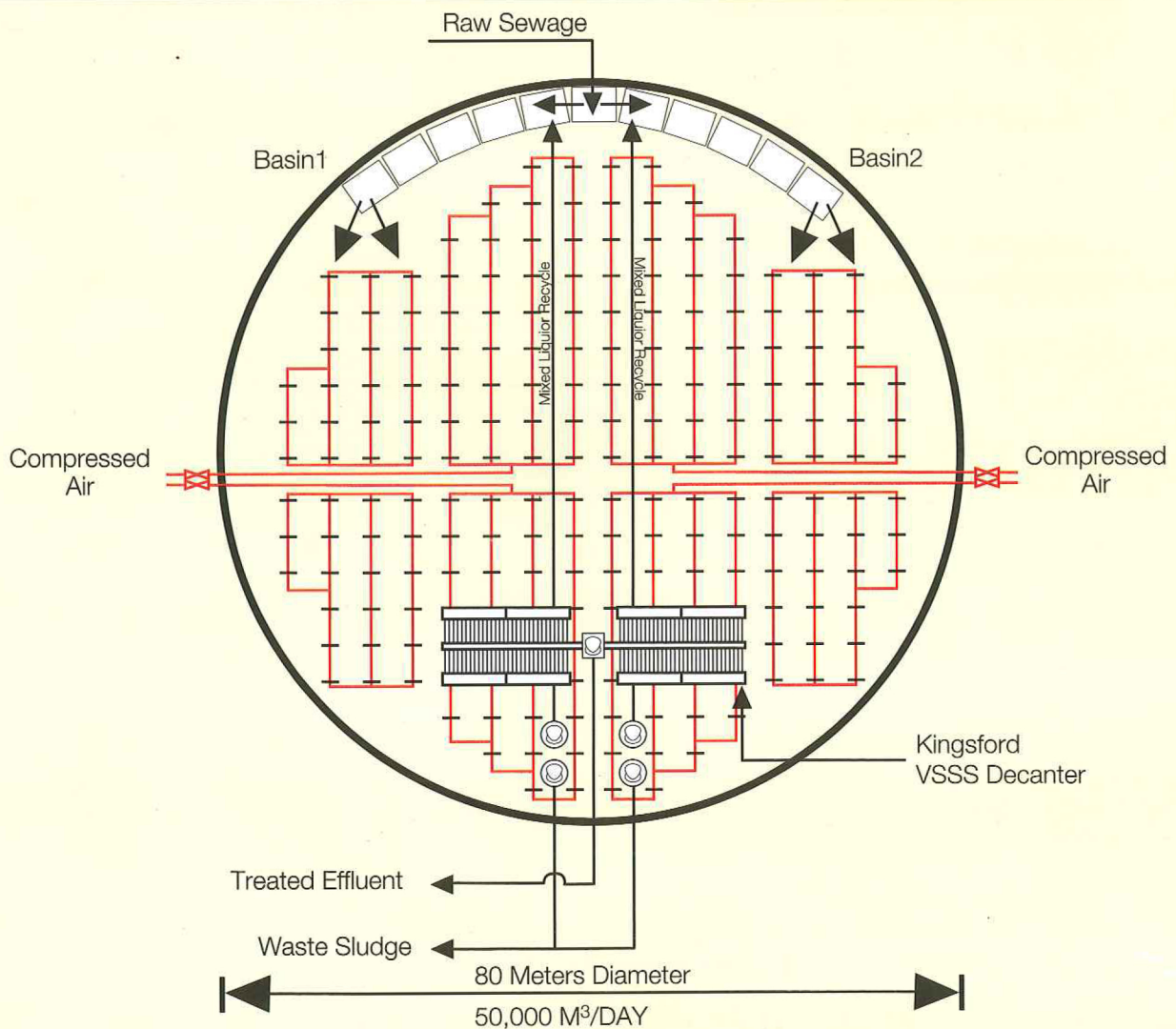


Activated sludge from
conventional process
Dispersed & poor setting

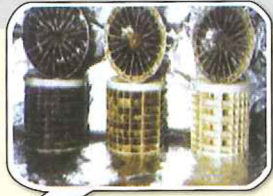


Kingsford BASS™

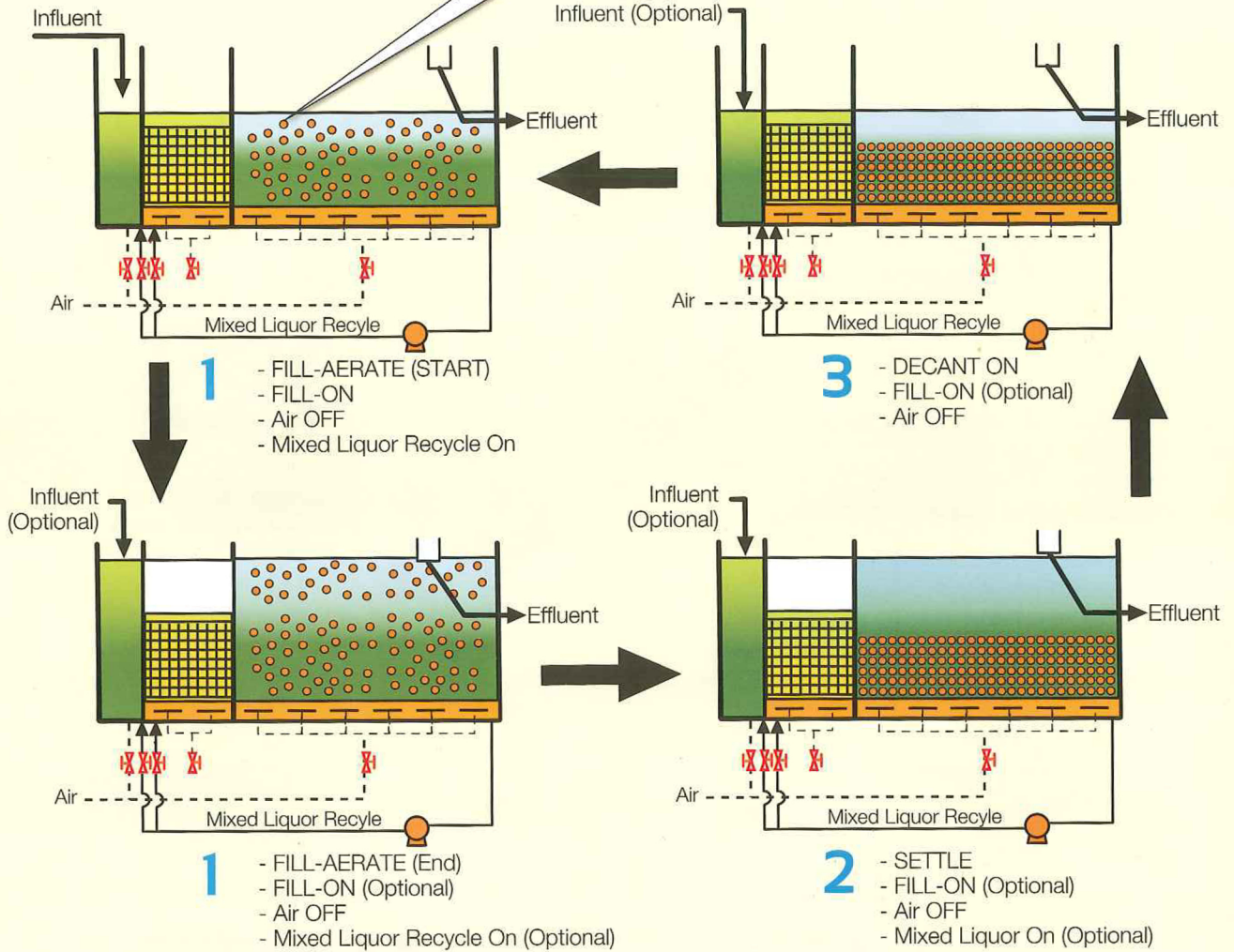
The Biofilm Activated Sludge System BASS™ 2 - Basin Module



BASS™ Reaction Cycle



Typical Biofilm Carrier for Kingsford BASS™ BNR process



BASS™ Process Flow Diagram

